

You'll never drive alone

There are many advantages to sharing a vehicle or travelling together with others. Shared mobility saves money, frees up the roads and protects the environment. Hamburg offers locals and visitors a wide range of innovative services. These can be booked conveniently via any smartphone and can be combined according to one's individual preferences. Providing an ideal supplement to existing local public transport services, Hamburg's mobility solutions range from shuttle services to rental bikes and are readily available to a wider public. With its innovative shared mobility concepts, Hamburg is demonstrating how intelligent traffic solutions contribute to improving the quality of life in metropolitan regions. The growing range of mobility services together with the world's largest electric ride pooling fleet makes the city a showcase for future urban mobility. The graphic shows a selection of diverse mobility services that are already available today or will be offered in the future.

Ride-Pooling

Ride pooling is a service where passengers share a vehicle. They are picked up and taken to their desired destination.



mytaxi match

Vehicles: 2.000
Passengers: 1-7
(since 2009)



MOIA

Vehicles: 500
Passengers: 1-6
(since 2019)



HEAT

Vehicles: 3
Passengers: 1-10
(2020)



CleverShuttle

Vehicles: 50
Passengers: 1-6
(since 2017)



ioki

Vehicles: 20
Passengers: 1-6
(since 2017)



Bike-Sharing

Classic bike sharing enables users to rent and return shared bicycles at fixed stations.



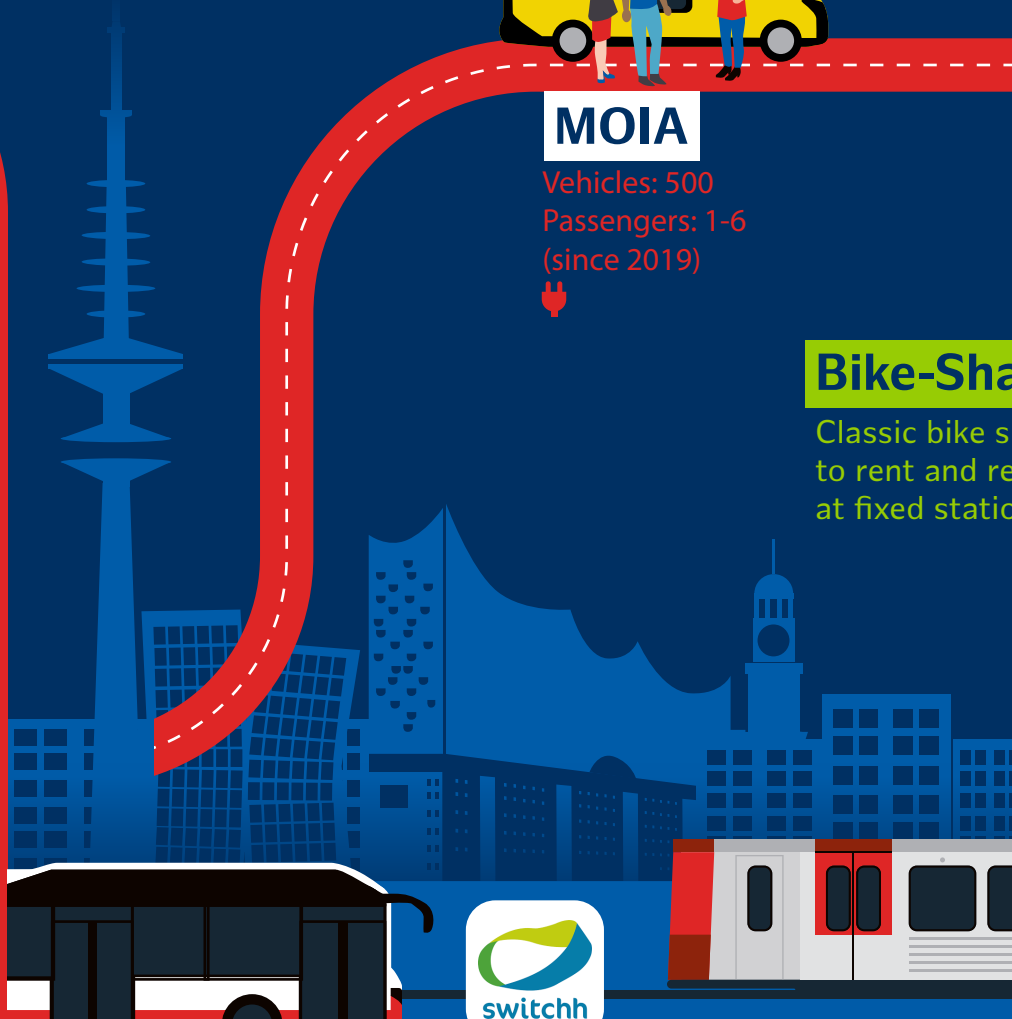
StadtRad

Vehicles: 2.450
Passengers: 1
(since 2009)



Urban Air Mobility (UAM)

Hamburg is one of the EU's pilot regions for exploring the civilian use of drones and other urban air mobility technologies.



In Hamburg, shared mobility has been available as part of public transport for more than 100 years. Whether metro, rental bike or car sharing – the digital platform switchh is aimed to connecting all relevant mobility services in one application.

Free-Floating

In free-floating car sharing, vehicles are freely available within a defined area. After the journey, they can be parked at the desired destination.



UBEEQO

Vehicles: 130
Passengers: 1-5
(since 2016)



drivy

Vehicles: 300
Passengers: 1-9
(since 2014)



car2go / DriveNow

Vehicles: 1.500
Passengers: 1-5
(since 2011/13)



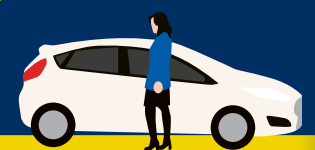
Car-Sharing

In station-based car sharing, vehicles are picked up at fixed stations and returned there again after the journey.



Flinkster

Vehicles: 31
Passengers: 1-9
(since 2001)



cambio

Vehicles: 165
Passengers: 1-5
(since 2007)



Drive concept

 Conventional
  Electric
  Hybrid
  Gas
  H₂ Hydrogen
  Human-powered

more information: www.future.hamburg // Last updated: April 2019